



The end-to-end reliability forum.

Northwest Chapter

WWW.7X24NW.ORG

Mission Statement

The 7x24 Exchange Northwest Chapter's mission is to provide an open educational forum dedicated to the continuous improvement and increased awareness of data center reliability focusing on the key disciplines of design, construction, maintenance, security and management with the goal of obtaining continuous data center operations.

Mark Your Calendar

March 28, 2006

7x24 Exchange NW Chapter
Winter Session
Microsoft Solutions Center
Redmond, WA
3:15 pm - 7pm

Spring 2006

7x24 Exchange NW Chapter
Spring Session
Date and Location to be
Announced

June 4 - 7, 2006

7x24 Exchange
Spring Conference
JW Marriott Orlando
Grande Lakes, Orlando, FL

7x24 Exchange
(646)486-3818

www.7x24exchange.org

winter 2006 UPDATE

Fall Chapter Session

- Arc Flash Hazard and Electrical Safety
- SprayCool™ Technology in the Data Center
- Thermal and Compressed Air Energy Storage

The Fall Session presented a broad look at new issues and emerging trends in the data center industry. Gary Larkins presented an in depth analysis on the hazards of arc flash and the impacts on data center maintenance, as well as a forward look at developing electrical safety codes.

Leonard Ruff and Paul Knight shared a business case analysis for implementing a new liquid cooling technology for servers into the data center environment that can create significant energy savings while allowing for increased thermal densities.

Ashish Moondra introduced a new thermal and compressed air energy storage system for data center back up power that does not rely on batteries.

Many thanks to all the presenters that made the Fall Session so successful.

National 7x24 Exchange News

- 2005 Fall Conference, Carlsbad, California

The National Fall Conference was held this past November in beautiful Carlsbad, California at the La Costa Resort. A wide variety of topics provided attendees with a wealth of timely information ranging from wireless security, high density data center design, thermal management, new storage technologies, case studies and much more. The vendor sponsored evening event at Marine Corps Air Station Miramar gave members a behind the scenes look at the rigorous training and dedication of our armed services.

NW Chapter members should make it a point to attend one of the national conferences. The next conference will be held this June in sunny Orlando, FL. For more information, visit the national web site at: www.7x24exchange.org.



La Costa Resort and Spa

March 15, 2006

Date

Tuesday, March 28,
2006
3:15 pm - 7:00 pm

Microsoft
Solutions Center
Building 25
15700 NE 39th St.
Redmond, WA

Agenda

3:15 pm
Sign In &
Networking

4:00 pm
Physical Threat
Monitoring
in the Data Center

4:45 pm
Break

5:30 pm
Dependent Failures in
Critical Facilities

6:15 pm
Power Chain
Auditing

RSVP

by Thursday,
March 23
to Doug Bors,
Sophometrics

T: 206-963-3077
E: dbors@sophometrics.com

Mission Critical Roundtable

Managing the Edges - Security & Power

Physical Threat Monitoring in the Data Center

Chris Gaskins
Product Line Manager for Environmental & Security products at APC

Most data centers have some type of monitoring and protection in place to guard against digital threats. However, monitoring for physical threats in the data center is not so well understood and in many cases is overlooked. "Physical Threat Monitoring in the Data Center" provides an introduction to the various types of physical threats and scenarios that can affect data centers as well as recommended solutions.

Presented by Chris Gaskins a 15 veteran of the high tech industry where he has held a range of jobs in engineering, product management, and support. His technical background includes experience with PC based servers, systems management, network management, as well as digital and physical security. Chris is currently the Product Line Manager for Environmental & Security products at APC which includes the NetBotz family of products.

Dependent Failures in Critical Facilities

Doug Bors
Sophometrics

During the past decade the critical facility industry, including engineers, equipment vendors, contractors, and owners, has passed through one level of learning. It is time to move on. We will explore dependent failures and how they are represented in reliability analysis. We will look at two examples.

First, we will review the findings of a pre-move-in analysis of a large facility. The data center operator was able to consistently force a failure in an otherwise robust system. Our analysis was focused on the question: How often might this forced failure occur during normal operation and maintenance?

Second, we will review the findings of a post-failure analysis of a small (but complex) system. In this case, the dynamic action of the system led to a system that, as a whole, was less reliable than its components.

Doug Bors is President of Sophometrics Inc. Doug Graduated from MIT in 1980 with BSEE (Electrical Engineering) and BSAD (Architectural Design) degrees. After twenty years of consulting and teaching, Doug established Sophometrics to concentrate on highly specialized design problems.

Power Chain Auditing

Alan Chiste
Regional Power Quality Products Manager
Eaton Power Quality Corporation

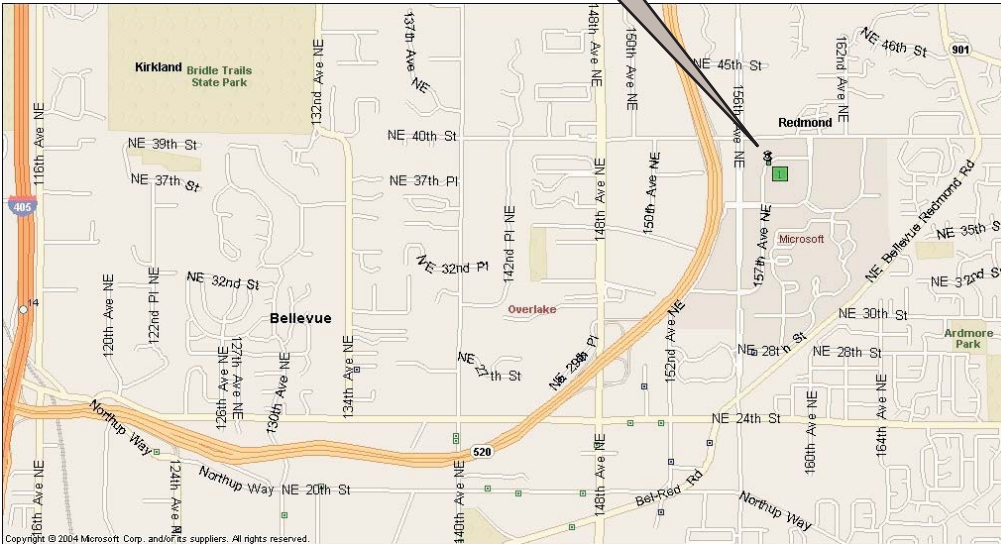
Anomalies within critical facilities (Data Centers) can manifest themselves in many forms and locations and create conditions unacceptable to stable data center operations. The localized investigation of the problem may not identify the true issues associated with the facility. A systematic approach of Power Chain Analysis is best suited to determine root causes and offer owners and operates confidence of system stability and reliability. Alan will outline this methodology and highlight the benefits associated with a more comprehensive approach to electrical power quality in the data center environment.

March 15, 2006

Meeting Location

Microsoft
Solutions Center
Building 25
15700 NE 39th St.
Redmond, WA

Microsoft
Solutions Center



Directions

From SR 520 exit at NE 40th Street, proceed east on NE 40th Street to 159th Avenue NE. Turn right on 159th Ave. NE and proceed south to NE 39th Street. Turn right on NE 39th Street, Building 25 will be on your right.

Parking is available in the lot east of Building 25 or in any parking space marked visitor.

Note: Photo identification is required for admission to Building 25. If you park a car on campus, the receptionist will require your license plate number.

RSVP

Please make sure you have submitted your name to Doug Bors at Sophometrics prior to the meeting date. Doug can be reached at:

T: 206-963-3077
E: dbors@sophometrics.com

Classifieds

University of Washington - Open Positions

For a full description of the available positions at the University of Washington Department of Computing and Communications, visit the 7x24 Exchange Northwest Chapter Website: www.7x24nw.org/classifieds. On line applications are available at: <http://depts.washington.edu/cac>.

Data & Routing Center Planner

Network Specialist

Lead Network Engineer

Presentations Wanted

The Northwest Chapter of the 7x24 Exchange wants to hear from you! If you have an interesting topic relating to the continuous operations of mission critical facilities, share it with our membership. We encourage presentations from users, vendors and consultants on new technologies, products, case studies, and business methods. Submit your presentation ideas to our Program Chair, Jon Hessen at 425-638-0340, jhessen@ppcwa.com.

If you would like to sponsor an upcoming meeting of the chapter, please see our sponsorship guidelines at: www.7x24nw.org.

Officers & Committees

President

Doug Bors
Sophometrics

T: 206-963-3077
E: dbors@sophometrics.com

Vice President

Bill Hunter
Cingular Wireless

T: 425-288-2950
E: bill.hunter@cingular.com

Treasurer

Rob Costa
Boeing Information & Support Services

T: 425-865-2187
F: 425-865-2961
E: robert.j.costa@boeing.com

Secretary

Leonard Ruff
Callison Architecture

T: 206-623-4646
F: 206-623-4625
E: lruff@callison.com

Program

Jon Hessen
T: 425-638-0340
F: 425-638-0341
E: jhessen@ppcwa.com

Newsletter - Website

Leonard Ruff
Callison Architecture

T: 206-623-4646
F: 206-623-4625
E: leonard.ruff@callison.com



Northwest Chapter

Membership Application

Membership Type: Individual \$50 per year Corporate \$200 per year
 Renewal New Member

For corporate memberships, complete one application for each individual and return the applications together with your membership fee. Corporate memberships may include an unlimited number of members per company. Send applications and payment to: Leonard Ruff, Callison Architecture, 1420 Fifth Avenue, Suite 2400 Seattle, WA 98101. Make checks payable to: 7x24 Exchange Northwest Chapter

Name: _____

Title: _____

Company: _____

Mailing Address: _____

City: _____ State: _____

Country: _____

Telephone: _____ Fax: _____

Email Address: _____

Remember, you can register on-line at: www.7x24nw.org.

March 15, 2006